

Skyline and Viewshed Analysis US Highways

La Plata County, Colorado

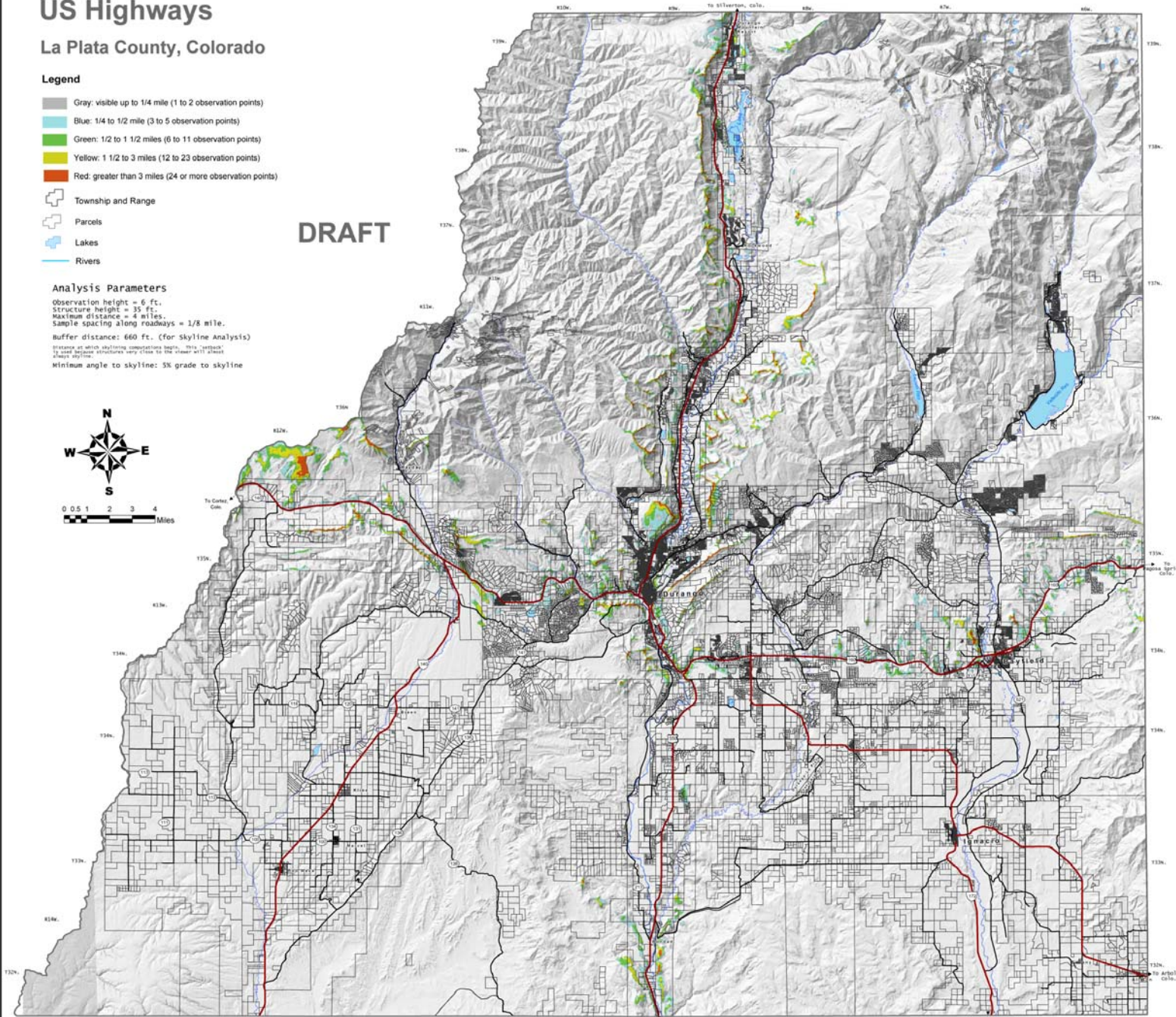
Legend

- Gray: visible up to 1/4 mile (1 to 2 observation points)
- Blue: 1/4 to 1/2 mile (3 to 5 observation points)
- Green: 1/2 to 1 1/2 miles (6 to 11 observation points)
- Yellow: 1 1/2 to 3 miles (12 to 23 observation points)
- Red: greater than 3 miles (24 or more observation points)
- Township and Range
- Parcels
- Lakes
- Rivers

Analysis Parameters

Observation height = 6 ft.
 Structure height = 35 ft.
 Maximum distance = 4 miles.
 Sample spacing along roadways = 1/8 mile.
 Buffer distance: 660 ft. (for Skyline Analysis)
 Distance at which skylining computations begin: 10% (offset)
 to road because structures very close to the street will almost
 always appear.
 Minimum angle to skyline: 5% grade to skyline

DRAFT



Disclaimer: THIS INFORMATION IS PROVIDED AS IS WITHOUT WARRANTY OF ANY KIND, EITHER EXPRESS OR IMPLIED, INCLUDING BUT NOT LIMITED TO THE IMPLIED WARRANTIES OF MERCHANTABILITY AND FITNESS FOR A PARTICULAR PURPOSE. IN NO EVENT SHALL LA PLATA COUNTY BE LIABLE FOR ANY DAMAGES WHATSOEVER INCLUDING DIRECT, INDIRECT, INCIDENTAL, CONSEQUENTIAL, LOSS OF BUSINESS PROFITS OR SPECIAL DAMAGES, EVEN IF LA PLATA COUNTY HAS BEEN ADVISED OF THE POSSIBILITY OF SUCH DAMAGES.

